



# CL Series

COLOR STANDARD & HIGH RESOLUTION CAMERAS

## CL-301

• 330 lines resolution



## CLH-401

• 480 lines resolution



## F E A T U R E S

- Economical 1/3" format color cameras available in standard or high-resolution versions
- 12VDC / 24VAC auto-sensing dual voltage with line phase adjustment
- Accepts DC or Video Auto-Iris lenses using standard 4 pin mini connector
- Fast linear electronic iris (1/60 - 100,000 second)
- CS-Mount (C-Mount with adapter)
- DC Iris level adjustment



Side panel view



Rear panel view



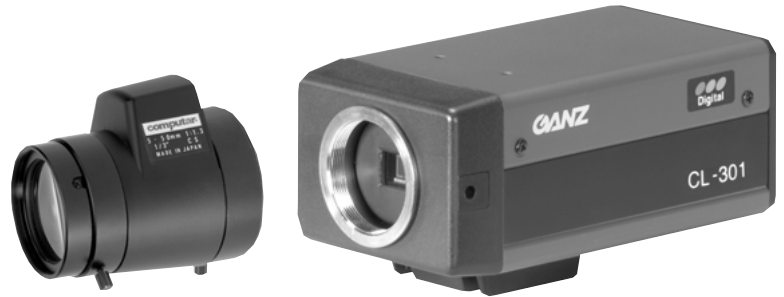
CAMERAS

## AVAILABLE MODELS

**CL-301** Standard Resolution Color camera

**CLH-401** High Resolution Color camera

# CL Series Cameras



## SPECIFICATIONS

TYPE	COLOR STANDARD RESOLUTION	COLOR HIGH RESOLUTION
<b>MODELS</b>	<b>CL-301</b>	<b>CLH-401</b>
<b>RESOLUTION (HORIZONTAL)</b>	330 lines (horizontal)	480 lines (horizontal)
<b>TV SYSTEM</b>	NTSC	NTSC
<b>SYNCHRONIZATION SYSTEM</b>	Internal or Linelock (manual switch)	Internal or Linelock (manual switch)
<b>IMAGE SENSOR</b>	1/3" CCD Interline	1/3" CCD Interline
<b>EFFECTIVE ELEMENTS (H) X (V)</b>	510 (H) x 492 (V) pixels	768 (H) x 492 (V)
<b>IMAGE OUTPUT</b>	1.0V p-p/75 ohms	1.0V p-p/75 ohms
<b>S/N RATIO</b>	More than 48dB	More than 48dB
<b>MINIMUM ILLUMINATION</b>	0.8 lux at f1.2/50 IRE   0.36 lux at f0.8/50 IRE	1.6lux at f1.2/50 IRE   0.72 lux at f0.8/50 IRE
<b>GAMMA CHARACTERISTICS</b>	0.45	0.45
<b>LENS MOUNT</b>	CS-Mount	CS-Mount
<b>IRIS CONTROL</b>	Video iris: Shutter speed 1/60 sec fixed DC iris: Shutter speed 1/60 sec fixed AES: 1/60 - 100,000 sec	Video iris: Shutter speed 1/60 sec fixed DC iris: Shutter speed 1/60 sec fixed AES: 1/60 - 100,000 sec
<b>WHITE BALANCE</b>	ATW/AWB	ATW/AWB
<b>INPUT &amp; OUTPUT</b>	Video output: Power / 9VDC min., less than 50mA	Video output: Power / 9VDC min., less than 50mA
<b>VOLUME</b>	Linelock phase adjustment (L.L. mode); DC iris level adjustment (effective only in DC iris mode)	Linelock phase adjustment (L.L. mode); DC iris level adjustment (effective only in DC iris mode)
<b>SWITCHES</b>	Iris control: AES/DC/Video BLC: On/Off	Iris control: AES/DC/Video BLC: On/Off
<b>POWER SUPPLY</b>	AC24V ± 10% (60Hz ± 1%) or DC12V ± 10%	AC24V ± 10% (60Hz ± 1%) or DC12V ± 10%
<b>POWER CONSUMPTION</b>	Less than 3.6W	Less than 3.8W
<b>OPERATING TEMPERATURE</b>	-10° - + 50°C	-10° - + 50°C
<b>AMBIENT HUMIDITY</b>	RH80% max (keep free from dampness)	RH80% max (keep free from dampness)
<b>EXTERNAL DIMENSIONS</b>	55 (W) x 40 (H) x 102 (D) mm 2.17" (W) x 1.58" (H) x 4.02" (D)	55 (W) x 40 (H) x 102 (D) mm 2.17" (W) x 1.58" (H) x 4.02" (D)
<b>WEIGHT</b>	280g	280g

### DISTRIBUTED BY:



**CBC (AMERICA) Corp.**

**NEW YORK:** 55 MALL DRIVE COMMACK, NY 11725  
 TEL: 1 (800) 422-6707 • (631) 864-9700 • FAX: (631) 543-5426  
**CALIFORNIA:** 20521 EARL STREET TORRANCE, CA 90503  
 TEL: 1 (800) 888-0131 • (310) 793-1500 • FAX: (310) 793-1506